

# MONTHLY MEMBERSHIP PROGRESS REPORT

LOCATION SOUTH DAKOTA

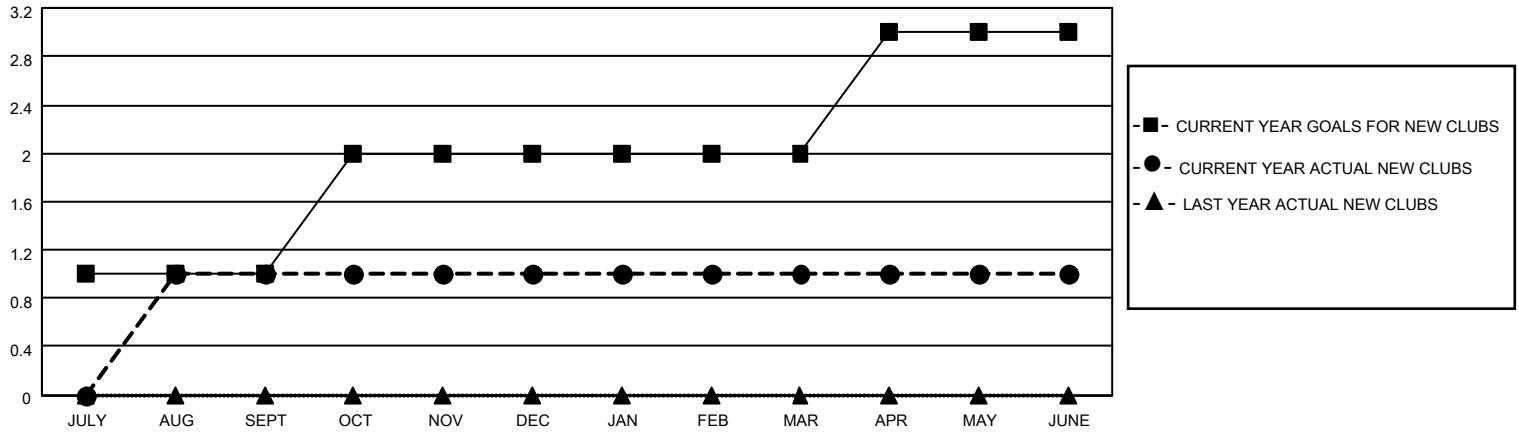
District 5 SE

Results as of: 6/30/2021

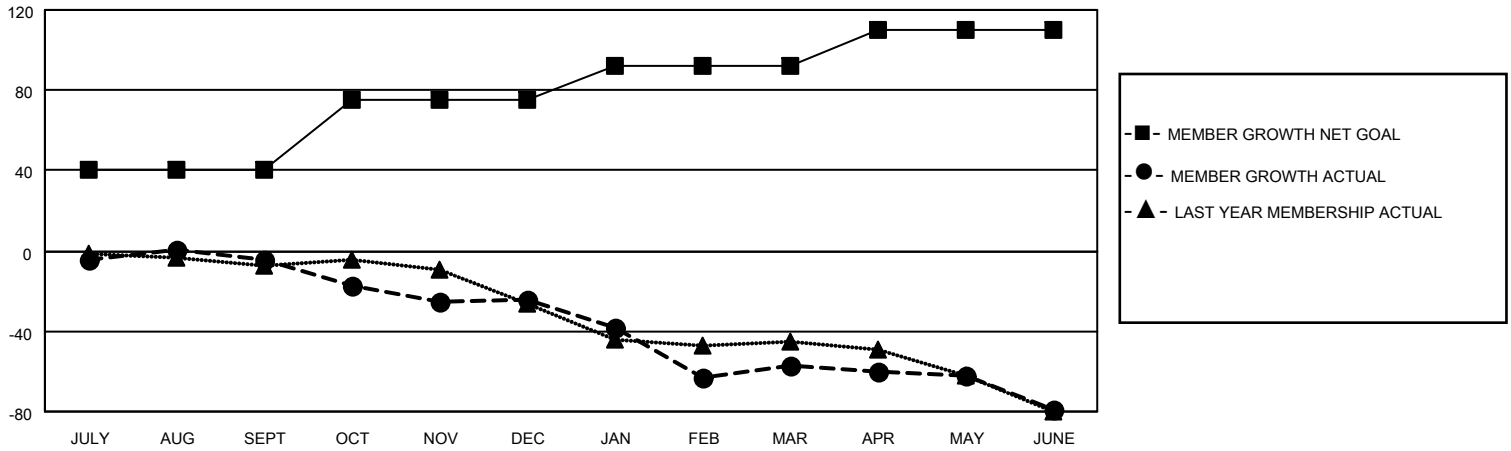
Clubs			
RESULTS FOR 2020-2021			
QUARTER	NEW CLUB GOAL	NEW CLUBS	DROPPED CLUBS
JULY/AUG/SEPT	1	1	0
OCT/NOV/DEC	1	0	0
JAN/FEB/MAR	0	0	3
APR/MAY/JUNE	1	0	0

Members			
RESULTS FOR 2020-2021			
QUARTER	MEMBER GROWTH NET GOAL	MEMBER GROWTH ACTUAL	DROPPED MEMBERS ACTUAL (including transfers)
JULY/AUG/SEPT	40	22	23
OCT/NOV/DEC	35	11	30
JAN/FEB/MAR	17	18	49
APR/MAY/JUNE	18	8	27

**GOALS AND ACTUAL NEW CLUBS CUMULATIVE**



**GOALS AND ACTUAL MEMBERS CUMULATIVE**



**DROPPED CLUBS: 3**

19 CLUBS OF 44 ADDED 1 OR MORE NEW MEMBERS

<u>GENDER DISTRIBUTION</u>	
MALE	729 (68.97%)
FEMALE	328 (31.03%)

<u>DROPPED MEMBERS</u>	
DECEASED	21
CLUB CANCELLED	27
OTHER	81
<b>TOTAL</b>	<b>129</b>

[CLICK HERE FOR CUMULATIVE MEMBERSHIP DATA](#)

TOTAL FAMILY UNIT MEMBERS	172
FAMILY MEMBERS PAYING HALF DUES	86